



***ZiLOG Universal Infrared  
Remote Reference Design***





*Table of Contents*

Overview ..... 5

Theory of Operation ..... 7

    Hardware Overview ..... 7

    Key Definition ..... 8

    Firmware Overview ..... 8

    Key Scanning ..... 12

    Programming Procedure ..... 13

Results of Operation ..... 14

Summary ..... 14

References ..... 14

    Source Code(s) ..... 14

    Application Note ..... 14

Appendix A Schematics of Z86L8800ZCO ..... 15

Appendix B UIR Brand List with Code Numbers ..... 16

Appendix C Acronyms ..... 34





## Overview

ZiLOG’s Universal Infrared Remote (UIR) is a remote control that sends out infrared signals to control several types of appliances such as TVs, VCRs, Satellites, Cable, CD players, Amplifier/Receivers, etc. Different appliances require different encoding formats, protocols and data. This application note provides a reference for design with the Zilog IR controller and the UIR database.

Various IR signals are compressed and encoded into Zilog’s database format. A designer need not go through the entire database format, but simply call up a subroutine. IR data relating to the specific key for the appliance brand and the application device are retrieved and sent out.

Zilog offers a wide range of infrared remote controllers. Low power Microcontroller Units (MCUs) are designed to support infrared remote control signals. Two hardware timers, T8 & T16, generate IR signals accurately without the software latency associated with turning the IR LED On/Off. P36 output supports the different logic operations of the T8 and T16 timers providing flexibility to support IR and RF applications. Table 1 lists Zilog’s family of IR remote controllers.

**Table 1 IR Remote Controllers**

Device	Process Speed	Features	Package	Development Tools
<b>IR Controller</b>	CMOS: 8 MHz	Watch-Dog Timer (WDT) 2 Analog Comparators with Output Option 3 Standby Modes 2 Enhanced Counter/Timers -Auto Pulse -Reception/Generation Auto Power-On Reset 2V Operation RC Oscillator Option Low-Voltage Standby Low-Voltage Detect/Protect High-Current Drivers 5 Vectored Interrupts (L82/L85/L88) 6 Vectored Interrupts (L81/L86/E86/D86) (L81/L86/E86/D86)	<a href="#">28-Pin DIP</a>  <a href="#">28-Pin SOIC</a>	<a href="#">Z86L7103ZEM</a> Emulator  Z86L9800ZEM Emulator  Z86L8800ZCO Evaluation Board
<b>Masked ROM:</b> <a href="#">Z86L82</a> (4K ROM) <a href="#">Z86L85</a> (8K ROM) <a href="#">Z86L88</a> (16K ROM) <a href="#">Z86L81</a> (24K ROM) <a href="#">Z86L86</a> (32K ROM)				
<b>OTP:</b> <a href="#">Z86E86</a> (32K, 5V) Z86D86 (32K, 3V)				



Table 1 IR Remote Controllers

Device	Process Speed	Features	Package	Development Tools
<b>IR Controller</b>  <b>Masked ROM:</b> <a href="#">Z86L98</a> (64K ROM)  <b>OTP:</b> Z86D98 (3V)	CMOS: 8 MHz	Watch-Dog Timer (WDT) 2 Analog Comparators with Output Option 3 Standby Modes 2 Enhanced Counter/Timers -Auto Pulse -Reception/Generation Auto Power-On Reset 3V Operation RC Oscillator Option High-Current Drivers Low-Voltage Standby Low-Voltage Detect/Protect 6 Vectored Interrupts	<a href="#">28-Pin DIP</a>  <a href="#">28-Pin SOIC</a>	Z86L9800ZEM Emulator  Z86L8800ZCO Evaluation Board
<b>IR Keyboard Controller</b>  <b>Masked ROM:</b> <a href="#">Z86L87</a> (16K ROM) <a href="#">Z86L89</a> (24K ROM) <a href="#">Z86L73</a> (32K ROM)  <b>OTP:</b> <a href="#">Z86E73</a> (32K, 5V) <a href="#">Z86D73</a> (32K, 3V)	CMOS: 8 MHz	Watch-Dog Timer (WDT) 2 Analog Comparators with Output Option 3 Standby Modes 2 Enhanced Counter/Timers -Auto Pulse -Reception/Generation Auto Power-On Reset 3V Operation RC Oscillator Option Low-Voltage Standby Low-Voltage Detect/Protect High-Current Drivers 6 Vectored Interrupts	<a href="#">40-PinDIP</a> <a href="#">44-PinPLCC</a> <a href="#">44-Pin QFP</a>	<a href="#">Z86L7103ZEM</a> Emulator  Z86L9800ZEM Emulator  Z86L8800ZCO Evaluation Board
<b>IR Keyboard Controller</b>  <b>Masked ROM:</b> Z86L43 (4K ROM)  <b>OTP:</b> Z86E43 (4K, 5V)	CMOS: 8 MHz, 16 MHz (E43 only)	2 Standby Modes 2 Counter/Timers ROM/RAM Protect Low-Voltage Protection 2 Analog Comparators Low EMI Option Watch-Dog Timer (WDT) Power-On Reset (POR) Low-Voltage Operation (L43 Only) 6 Vectored Interrupts	<a href="#">40-Pin DIP</a> <a href="#">44-Pin PLCC</a> <a href="#">44-Pin QFP</a>	Z86C5000ZEM Emulator  Z86C5000ZPD Emulator  Z86E4002ZDP Adapter

## Theory of Operation

### Hardware Overview

The most common UIR circuit in a Zilog UIR controller is diagrammed below in Figure 1. Zilog controllers integrate most external components such as pull up resistors for key scanning and transistors for driving visible LEDs. Zilog also offers microcontrollers with input and output pins for most key matrices. P36 is the T8 and T16 timer output. By selecting the AND of these two timers and outputting the signal with the carrier at P36, this signal drives the transistor directly to switch the IR LED. P37 has a high current drive which directly controls the LED indicator. Port 2 is configured as input with internal pull-up resistance. It is also the Stop Mode Recovery source which wakes up the microcontroller from a power-saving Stop mode. Port 0 is configured as open drain output, which is essential for key matrix design. For detailed UIR design considerations, refer to the application note "Universal Infrared Design." If comparators are not used, connect Pref1 to  $V_{CC}$  to avoid current leakage.

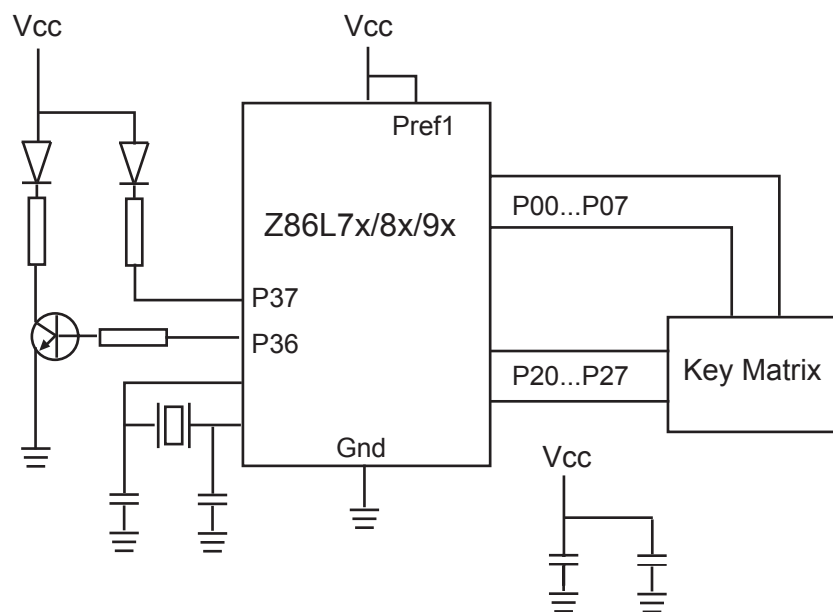


Figure 1 Standard Zilog UIR Circuit



## Key Definition

Key scanning is accomplished by using port 0 as open drain output and port 2 as input (with internal pull-up). Key scanning supports a 8 x 8 = 64 key matrix. Each key is defined as by its Column-Row address. The designer can change key locations to suit a PCB design easily. For example, key “TV” is defined as %74 in the KEYEQU.H file. The "7" is Port 2 bit 7 of and "4" is Port 0 bit 4. Just changing the KEYEQU.H header file rearranges the key location. Device keys are TV, VCR, CABLE, SAT, AMP, CD, and DVD. Rows P00 and P01 are used for Audio Amplifier keys. Refer to Table 2.

**Table 2 Key Definition Matrix**

row/col	P27	P26	P25	P24	P23	P22	P21	P20
<b>P00</b>	Sur Mode	Sur ON	Front	Center	Rear	Delay	Delay Up	Delay dn
<b>P01</b>	Disc	Tape	Tuner	Television	Video1	Video2	Audio	Test
<b>P02</b>	Up	Down	Left	Right	Dsp mode	Dsp ON	PIP	Swap
<b>P03</b>		REC	STOP	PLAY	PAUSE	REW	FF	AV
<b>P04</b>	TV	SAT	DVD	1	2	3		CH +
<b>P05</b>	VCR	AMP	AUX	4	5	6	Guide	CH -
<b>P06</b>	CABLE	CD	Info	7	8	9	Recall	VOL +
<b>P07</b>	Power	Mute	Menu	Clear	0	Enter	Select	VOL -

## Firmware Overview

The Z8 IR driver includes power-up initialization, key scanning, code enter and display, device change, code number, code search forward and backward and, most importantly, the database driver. It uses approximately 3 Kbytes of the program memory. The driver can be customized to a specific application. The rest of the memory is used for the IR database. The irdata.s file is generated by the IR Tools after the designer selects the device brand and code number from the database. Table 3 lists all the files for UIR reference design. Figure 2 is the IR\_Main flow chart and Figure 3 is the Check Device flowchart.





**Table 3 Files for UIR Reference Design**

<b>File Name</b>	<b>Description</b>
CONFIG.H	Headerfile : configuration of ports, options
KEYEQU.H	Header file : key matrix definition
MACROS.H	Header file : macros
MEMMAP.H	Header file : memory map for different registers
COMMAND.S	Firmware utilities: Code search forward, backward. Set code number, etc.
EXTRACT_A44.O	IR database extraction and interpretation driver object file to be linked for decoding database
IRDATA_A44.S	IR database generated by the IR tool program
IRMAIN.S	Main program
KDECODER.S	UIR operations : Punch through for TV, VCR. Change device Change code number Display code number
KEYSCAN.S	Key scanning on the 8x8 key matrix. Output the scan code in register KEY_SCANCODE & KEY_BUFFER
LEDTIMER.S	LED display, delay subroutine and timer
XMIT.S	Transmission of IR signal according to different encoding and repeat format

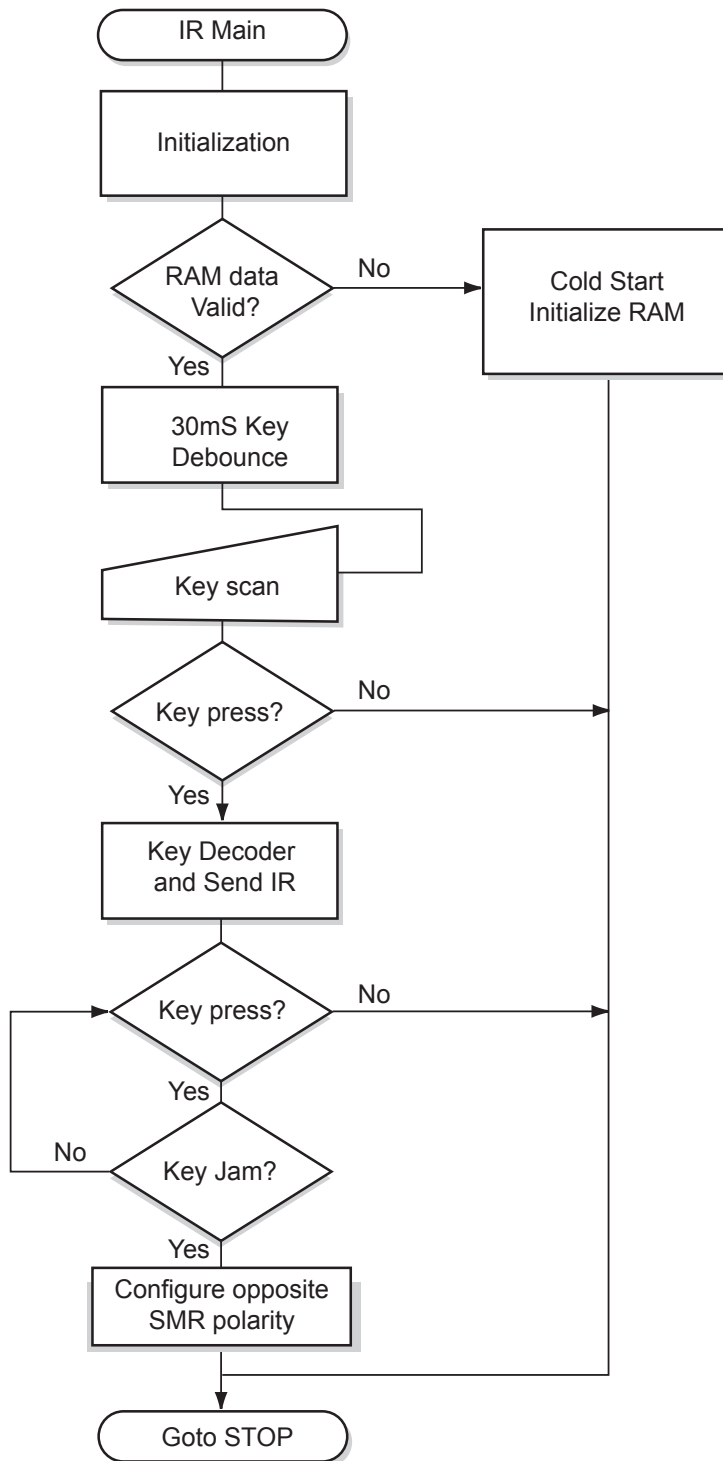


Figure 2 IR\_Main Flow Chart

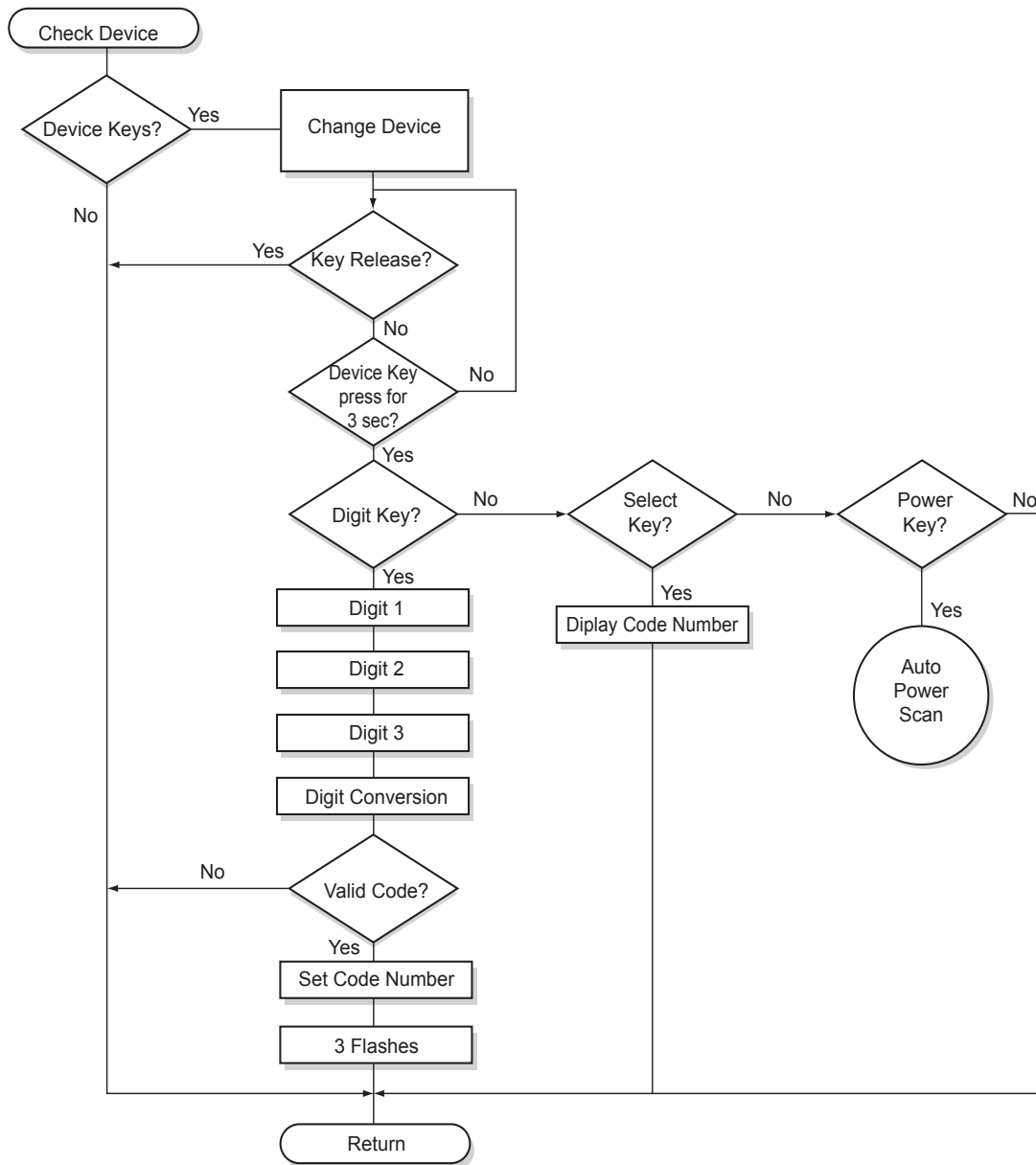


Figure 3 Check Device Flowchart



## **Key Scanning**

ZiLOG's IR controller integrates pull-up resistance at the input pins. This integration can reduce the number of external components required and assembly time. To minimize current consumption when pins connect to 0V, the internal pull-up is typically  $200\text{K}\Omega \pm 50\%$  at 3V at room temperature. The resistance value can change with  $V_{CC}$  and temperature variations. Therefore, the application design must be independent of resistance values. Refer to the Application Note "ZiLOG Universal Infrared Design" for a description of the effect of resistance and stray capacitance on key scanning design. To avoid the effect of resistance variation, a pre-charge must be implemented on the port 2 bus before every line scan.

### **Port 2 Pre-charge Procedure**

1. Write FFh to P0 and P2 (to set all outputs high).
2. Set P2 as push-pull.
3. Set P2 as output.
4. Wait for 17  $\mu$ seconds.
5. Set P2 as input.



## Programming Procedure

1. Change application device
  - Press and release any device key (for example, TV, VCR, Cable)
2. Change code (3-digit number of the code selected)
  - Press and hold the device key for 3 seconds. LED comes on for 3 seconds and then turns off.
  - Release the device key. LED stays on.
  - Press and release 3 digit keys one by one. LED goes off when pressing a key and on when the key is released.
  - LED flashes 3 times to indicate success after the 3 digits have been entered. It exits to the main program if a non-digit key is pressed or a code number is higher than the limit.
3. Check code number
  - Press and hold the device key for 3 seconds. LED comes on for 3 seconds and off afterward the key is released.
  - Press and release the SELECT key
  - A flashing LED indicates the code number. A quick flash equals zero; a slow flash equals one. It will first display the factor of one hundred, stop for 2 seconds; secondly, the ten factor, go off for 2 seconds; and finally, the digit factor.
4. Start Auto-scanning
  - Press and hold the device key for 3 seconds. The LED comes on for 3 seconds, then goes off.
  - Press and release the POWER key.
  - Press Ch+ to search forward. The UIR sends out POWER signal for the next higher code number.
  - Press Ch- to search downward. The UIR sends out POWER signal for the next lower code number.
  - Press the SELECT key to store the correct code.
  - The LED flashes 3 times if the code is stored.  
If the LED flashes rapidly 8 times, the code search is finished or the beginning code number must be re-entered.



## *Results of Operation*

The LED indicator on the remote control guides the user through programming, verifying and sending the IR signal. After programming the correct code number, the remote control can control one or more application devices (TV, VCR, cable, Sat, Amp, CD, etc.) The LED indicator stays on as long as the signal is transmitting. For example, to program the remote control for a SONY TV, first find the code number (272) from the code list table. Follow the “Change Code” programming procedure to change the code: press and hold the TV key for 3 seconds. Release the key after the LED flashes. Enter the digits “2”, “7”, “2” one by one. After the remote reads all three digits, the LED flashes 3 times to confirm successful programming. Point the remote control at the SONY TV, then press the POWER key to turn on the TV.

## *Summary*

Several field tests were conducted in shopping malls with the display devices. Contact the local ZiLOG Sales Office for more details.

## *References*

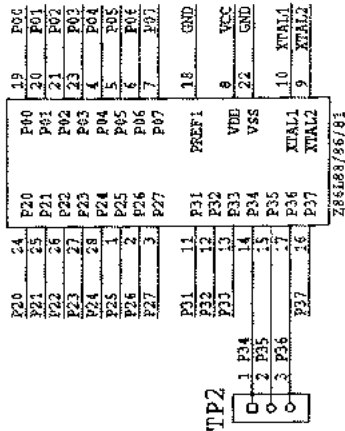
### **Source Code(s)**

Because source code is long, it is only available for download. Contact the local ZiLOG sales office for the file called Sourcecode.ZIP for a listing of file names.

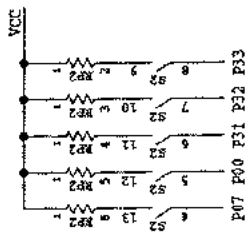
### **Application Note**

ZiLOG Universal InfraRed Design (P/N AN190101-IRX0799)

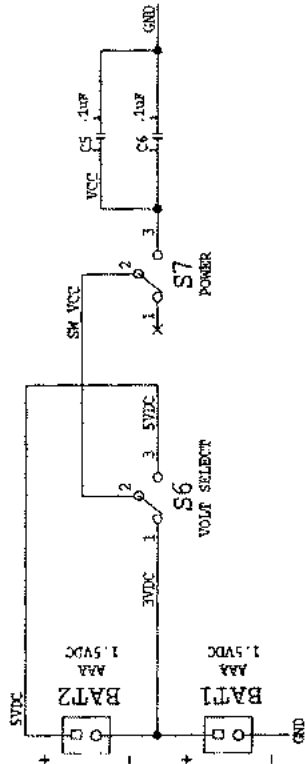
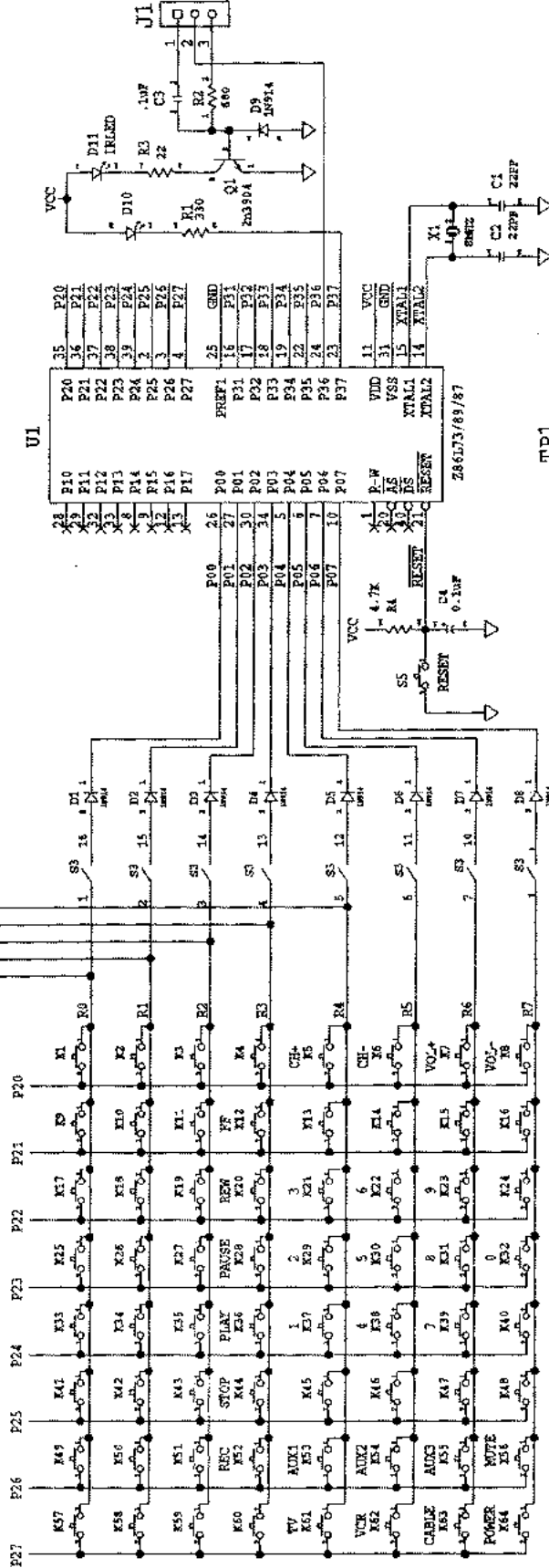
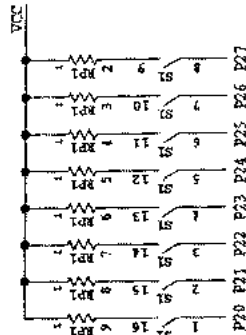
U2



RP2 = RESISTOR PACK IN X 8



RP1 = RESISTOR PACK IN X 8





**Appendix B**

***UIR Brand List with Code Numbers***

- Table 4 lists Television brands with code numbers.
- Table 5 lists VCR brands with code numbers.
- Table 6 lists cable names with code numbers.
- Table 7 lists satellite names with code numbers.
- Table 8 lists amplifier brands with code numbers.
- Table 9 lists Compact Disk brands with code numbers.
- Table 10 lists DVD brands with code numbers.

**Table 4 Television Brands**

<b>Brand</b>	<b>Zilog Code Numbers</b>
Admiral	116 234
Adventura	235
Aiko	126
Akai	63 91 117
Alba	33
Alleron	151
A-Mark	29
Amstrad	90
Amtron	145
Anam	28 29 83 105 145
Anam National	248 249 269
AOC	14 29 99 108 109 118 119 120 251
Archer	29
Audiovox	29 145
Bauer	35
Belcor	118
Bell & Howell	116 183 230
Bradford	145
Brockwood	14 118
Candle	14 95 97 98 108 118 120 121 235
Capehart	14





**Table 4 Television Brands**

<b>Brand</b>	<b>Zilog Code Numbers</b>																
Celebrity	117																
Circuit City	14																
Citizen	18	94	95	96	97	98	101	108	118	120	121	126	145	199	235	236	
Colortyme	14	118	120	122	254												
Concerto	97	118	120														
Contec	49	83															
Contec/Cony	123	124	145														
Craig	15	83	145														
Crown	94	145															
Curtis Mathes	94	101	108	115	118	120	125	199	230								
CXC	83	145															
Daewoo	2	91	92	94	109	118	119	120	126	127	213	214	256				
Daytron	14	118	120														
Dimensia	115																
Dixi	29	52	91														
Dumont	14	118															
Electroband	117																
Electrohome	3	5	94	118	120	128	129	130	269								
Elta	91																
Emerson	1	12	14	83	84	85	86	87	88	89	90	94	118	120	123	131	132
	133	134	135	136	137	138	139	140	141	142	143	144	145	146	147	148	149
	150	151	152	211	230	236	237	260	270								
Envision	108	118	120														
Etron	91																
Fisher	50	82	153	154	155	230											
Formenti	35																
Fortress	39																
Fujitsu	15	89	151														
Funai	15	83	89	145	151												
Futuretec	145																



**Table 4 Television Brands**

<b>Brand</b>	<b>Zilog Code Numbers</b>																
Futuretech	15	83															
GE	14	20	80	81	84	102	105	106	111	115	118	120	130	156	187	231	232
	239	269															
Genexxa	33																
Gibraltar	118																
Goldstar	14	52	78	79	94	97	109	118	119	120	123	128	129	159	160	161	228
Granada	3	14															
Grand	14																
Grandiente	3																
Grundy	145	151															
Hallmark	14	118	120														
Harvard	145																
Hinari	89																
Hitachi	3	10	24	71	72	73	74	75	76	77	94	97	118	120	123	124	163
	164	218	221	222	223	224	237	253									
Hitachi Pay TV	273																
IMA	145																
Infinity	64	165															
Janeil	235																
JBL	64	165															
JC Penney	46	81	94	101	108	109	111	115	118	119	120	121	130	156	161	166	167
	174	187	199	239	255												
JCB	117																
Jensen	70	118	120														
JVC	66	67	68	69	123	124	163	168	169	229	240						
Kawasho	65	117	118	120													
Kenwood	108	118	120	128	129												
Kloss	36	98	235														
Kloss Novabeam	170	171	241														
KTV	83	84	85	94	145	172	236										



**Table 4 Television Brands**

<b>Brand</b>	<b>Zilog Code Numbers</b>																
Lloyds	14																
Loewe	165																
Logik	183	266															
Luxman	97	118	120														
LXI	25	30	47	50	64	111	115	120	153	165	173	174	175	230	239		
Magnavox	4	36	64	95	99	108	118	120	121	128	165	170	171	176	177	178	184
	188	215	216	217	241	267											
Majestic	183																
Marants	165	52	64	108	118	120	165	179									
Matsui	91																
Megatron	14	120															
Memorex	14	50	91	116	120	182	183	230	266								
MGA	14	62	108	109	110	118	119	120	128	129	130	155	180	182			
Midland	239																
Minutz	156																
Mitsubishi	7	14	27	61	62	63	109	110	118	119	120	128	129	130	155	180	181
	182	212															
Motorola	234	269															
MTC	14	97	101	108	109	118	119	120	199								
Multitech	145																
NAD	14	30	112	120	173	174	243										
National	13	105	13														
NEC	23	97	100	107	108	109	118	119	120	129	185	254	269				
Nikkai	33	34															
Nikko	14	120	126														
Normande	0																
NTC	126																
Onwa	83	145															
Optimus	243																



**Table 4 Television Brands**

<b>Brand</b>	<b>Zilog Code Numbers</b>																
Optonica	37	39	192	234													
Orion	15	142	260														
Osaki	34																
Panasonic	6	11	12	13	60	64	104	105	106	165	263	265	269				
Philco	36	95	108	109	118	119	120	121	123	128	165	170	171	176	178	184	241
			267	269													
Philips	52	64	118	121	123	128	165	170	171	177	186	187	188	269	176		
Pilot	118																
Pioneer	59	77	112	118	120	189	190	237	243	264							
Portland	94	109	118	119	120	126											
Price Club	199																
Proscan	111	115	239														
Proton	14	26	94	103	120	123	191	244	118								
Pulsar	113	118															
Quasar	11	105	106	172	263	269											
Radio Shack	34	37	83	94	115	118	120	123	145	153	192	230					
RCA	16	17	25	53	54	55	56	57	58	77	102	109	111	115	118	119	120
			128	193	194	196	197	239	245	256	269	273	274				
Realistic	50	118	120	123	145	153	192	230									
Saisho	90	91															
Sampo	108	118	120														
Samsung	0	8	14	34	52	91	94	97	101	108	109	118	119	120	123	125	127
			128	129	198	255											
Sansui	260																
Sansung	199																
Sanyo	49	50	51	82	118	153	154	180	200	230							
SBR	52																
Schneider	52																
Scotch	120																



**Table 4 Television Brands**

<b>Brand</b>	<b>Zilog Code Numbers</b>																
Scott	83	87	89	94	118	120	123	132	142	145	151						
Sears	9	14	30	40	41	42	43	44	45	46	47	50	51	82	89	97	111
	118	120	124	128	129	151	153	154	155	169	173	174	201	202	230	239	
Seimitsu	14																
Sharp	21	22	37	38	39	49	94	118	120	123	137	192	203	205	210	234	
Shogun	118																
Siemens	49																
Signature	116	183	266														
Simpson	121																
Sony	114	117	259	268	272												
Soundesign	14	83	95	118	120	121	145	151									
Spectricon	29	99															
Squareview	15																
SSS	83	109	118	145													
Starlite	145																
Supra	97																
Supre-Macy	98	235															
Supreme	117																
Sylvania	35	36	64	95	108	118	120	121	128	165	170	171	176	177	178	188	207
	241	267	184														
Symphonic	15	145	270														
Tandy	33	39	234														
Tatung	105	237	269														
Technics	106																
Techwood	97	118	120	157													
Teknika	31	32	83	89	94	95	96	97	98	101	109	110	118	119	120	121	123
	124	126	145	151	177	182	183	199	266								
Teletech	91																
Tera	103	244															
Thomas	14																



**Table 4 Television Brands**

<b>Brand</b>	<b>Zilog Code Numbers</b>
Thompson	5
TMK	14 97 118 120
Toshiba	19 30 46 50 101 153 173 174 199 201 230 255
Totevision	94
Toyomenko	14
Universal	81 156 187
Vector Research	108
Victor	69 169 240
Video Concepts	63
Vidtech	14 109 118 119 120
Viking	98 235
Wards	37 81 89 102 108 109 116 118 119 120 128 132 151 156 156 165 170 171 176 177 183 184 187 188 192 208 209 266 267 268 270
Yamaha	108 109 119 120 128 129
York	14
Zenith	113 118 183 226 227 261 266 271
Zonda	29



Table 5. VCR Brands

Brand	Zilog Code Numbers
Admiral	154
Aiko	169
Aiwa	21
Akai	75 76 77 136 137 138 139 140 156 157 141 155
Alba	115
Amstrad	21
ASA	101
Asha	160
Audio Dynamics	12
Audio Dynamics	158
Audiovox	161
Beaumark	160
Broksonic	159
Broksonic	167
Bush	20
Calix	161
Candle	17 160 161 162 163
Canon	108 117
Capehart	115 116
Capeheart	74 164
Carver	36
CCE	35 169
Citizen	17 18 160 161 162 163 169
Colt	35
Craig	5 18 35 160 161 165
Curtis Mathes	8 17 78 108 153 163 166 160
Cybernex	160
Daewoo	74 114 115 123 167 169 170 162
Daytron	74 115
DBX	12 158



Table 5. VCR Brands

Brand	Zilog Code Numbers
Dumont	112
Dynatech	21
Electrohome	4 161 171
Electrophonic	161
Emerson	4 19 21 23 38 77 79 142 143 144 145 146 147 159 161 162 166 167 171 173 174 175 176 177 178 179 180
Fisher	3 5 21 25 26 28 29 80 86 112 113 165
GE	8 18 30 52 78 108 109 110 111 153 160
Go Video	106 107
Goldstar	2 17 31 126 161
Goodmans	20
Gradiente	168
Grundig	101
Harley Davidson	168
Harman Kardon	98 126
Harwood	35
Hinari	20
Hi-Q	165
Hitachi	15 16 21 32 33 72 75 118 119 120 121 122
JC Penney	11 12 18 72 80 108 126 158 160 161
Jensen	32 75
JVC	11 12 17 75 82 102 103 104 105 158
Kenwood	11 12 17 75 82 89 104 158 163
KLH	35
Kodak	161
Lloyd	21 168
Logik	20 35
LXI	161
M. Wards	4 5 6 18 19 20 21 108 129
Magnavox	36 37 101 108 129





Table 5. VCR Brands

Brand	Zilog Code Numbers
Magnin	160
Marantz	10 11 12 17 36 101 108 158 163
Marta	161
MEI	108
Memorex	5 21 89 100 108 112 124 154 160 161 165 168
MGA	4 38 77 99 171
MGN Technology	160
Midland	30
Minolta	32 72
Mitsubishi	4 32 38 39 40 41 42 44 45 46 47 71 77 82 97 98 99 104 171
Motorola	154
MTC	21 160 168
Muklititech	160
Multitech	30 35 163 168 18 20 21
NAD	96
NEC	9 10 11 12 13 17 49 50 51 75 82 104 125 126 158
Nikko	161
Noblex	160
Optimus	154 161
Optonica	65
Panasonic	1 14 73 108 130 132 133 134 135
Pentax	17 32 72 121 163
Perdio	21
Philco	36 37 108
Philips	65 101 108 181 36
Pilot	161
Pioneer	12 32 52 53 82 93 94 95 96 104 158
Portland	74 115 163
Proscan	8 52 129 153



Table 5. VCR Brands

Brand	Zilog Code Numbers																	
Protec	35																	
Pulsar	124																	
Quartz	89																	
Quasar	91	92	108															
Radio Shack	3	4	5	6	26	65	154	160	161	165	168	171						
Radix	161																	
Randex	161																	
RCA	0	7	8	18	32	52	54	55	56	57	60	61	62	72	78	121	127	128
	129 130 131 153 155 160																	
Realistic	21	26	65	86	89	108	112	154	160	161	165	168	171					
Ricoh	150																	
Saisho	145 146																	
Salora	89 99																	
Samsung	18	30	76	90	110	123	138	156	160	162	174							
Sanky	154																	
Sansui	12	63	75	82	104	125	158											
Sanyo	5	87	88	89	112	160	165											
SBR	101																	
Schneider	20																	
Scott	19	38	64	144	159	162	167	173										
Sears	3	5	25	26	28	32	72	80	86	89	112	113	161	165				
Sentra	115																	
Sharp	4	6	65	65	171													
Shintom	20 35																	
Shogun	160																	
Singer	35																	
Sony	148	149	150	151	152													
STS	72																	
Sylvania	21	36	37	38	99	108	168											
Symphonic	21 168																	



**Table 5. VCR Brands**

<b>Brand</b>	<b>Zilog Code Numbers</b>
Tandy	21
Tashiko	21 161
Tatung	11 75 85
Teac	11 21 56 75 168
Technics	73 108
Teknika	21 22 67 108 161 168
TMK	146 160 166
Toshiba	19 26 28 32 38 64 99 123 162
Totevision	18 160 161
Unitech	160
Vector Research	12 126 158 162 163
Victor	12 104 105 158
Video Concepts	12 77 158 162 163
Videosonic	18 160
Wards	32 35 48 65 68 69 70 72 154 160 161 162 165 168 171
XR-1000	35 168
Yamaha	11 12 17 75 126 158
Zenith	124 151 152



**Table 6. Cable Brands**

<b>Brand</b>	<b>Zilog Code Numbers</b>					
ABC	7	8	9	10		
Archer	11	12				
Century	12					
Citizen	12					
Colour Voice	13	14				
Comtronic	15					
Eastern	16					
Garrard	12					
Hytex	7					
Jasco	12					
Jerrold	5	17	18	30	9	10
Magnavox	19					
Movie Time	20					
NSC	20					
Oak	0	21	7			
Panasonic	1	6				
Philips	24	12	13	14	19	
Pioneer	2	3	25			
RCA	34					
Regency	16					
Samsung	26	15				
Scientific Atlanta	3	4	27	28		
Signal	15					
SL Marx	15					
Starcom	10					
Stargate	15					
Televue	15					
Tocom	8	17				
TV86	20					
Unika	12					



**Table 6. Cable Brands**

<b>Brand</b>	<b>Zilog Code Numbers</b>		
United Artists	7		
Universal	12	11	
Viewstar	20	19	
Zenith	3	32	33



**Table 7 Satellite Brands**

<b>Brand</b>	<b>Zilog Code Numbers</b>			
Alphastar	19			
Chaparral	0	1		
Cheyenne	1			
Dishnet	18			
Drake	2			
Drake	3			
EchoStar Dish	27			
GE	13	20	21	
General Instruments	4	5	6	
Hitachi	23	24		
Hughes Network	17	28		
JVC	22			
Magnavox	25			
Philips	25			
Primestar	16			
Proscan	20	21	13	
RCA	13	20	21	
Realistic	7			
Sierra	1			
Sony	14			
STS	8	9	10	11
Toshiba	12	15		
Uniden	26			



**Table 8 Amplifier Brands**

<b>Brand</b>	<b>Zilog Code Numbers</b>							
AIWA	2	38	39	33	34	35	36	37
Carver	21							
Citizen	24							
Fisher	21							
GE	26							
Goldstar	5							
Hitachi	32							
JVC	18	40						
Kenwood	6	41						
Luxman	1							
Magnavox	20							
Marantz	23							
Memorex	7							
NAD	11							
Nakamichi	9							
NEC	31							
Onkyo	4	14	15					
Optimus	12							
Panasonic	22							
Pioneer	3	17	7					
Proton	20							
Quasar	22							
RCA	19	42						
Scott	16							
Sharp	27	30						
Sherwood	10							
Sony	8	2	43	44				
Techniques	22							
Toshiba	25							
Victor	18							
Yamaha	0	13	45	46				



**Table 9 CD Brands**

<b>Brand</b>	<b>Zilog Code Numbers</b>		
ADC	017		
ADO	018		
Aiwa	000	019	
Akai	020		
Denon	022		
Dynatech	001		
Emerson	002		
Fisher	003	025	026
GE	027		
Hitachi	004		
Inkel	028		
JVC	005	029	
Kenwood	006	030	031
Luxman	032		
Magnavox	053		
Marantz	008	033	
MCS	034		
Mitsubishi	035	036	
Nakamichi	038	039	
NEC	007		
Onkyo	009	040	041
Optimus	042	043	044
Panasonic	010		
Pioneer	011	045	
RCA	012	024	
Sanyo	052		
Sears	021		
Sherwood	046		
Sony	013	023	047
Teac	048	049	050



**Table 9 CD Brands**

<b>Brand</b>	<b>Zilog Code Numbers</b>
Technics	014
Toshiba	037
Yamaha	015 016 051

**Table 10 DVD Brands**

<b>Brand</b>	<b>Zilog code Number</b>
JVC	005
Magnavox	004
Mitsubishi	003
Pioneer	002
RCA	006
Sony	001
Toshiba	000



## *Appendix C*

## *Acronyms*

UIR	Universal Infrared Remote
OTP	One Time Programmable
TV	Television
VCR	Video Cassette Recorder
CD	Compact Disc
MCU	Microcontroller
LED	Light Emitting Diode
RF	Radio Frequency
PCB	Printed Circuit Board
EEPROM	Electrical Erasable Programmable Read Only Memory

## **Information Integrity**

The information contained within this document has been verified according to the general principles of electrical and mechanical engineering. Any applicable source code illustrated in the document was either written by an authorized ZiLOG employee or licensed consultant. Permission to use these codes in any form, besides the intended application, must be approved through a license agreement between both parties. ZiLOG will not be responsible for any code(s) used beyond the intended application. Contact the local ZiLOG Sales Office to obtain necessary license agreements.

## **Document Disclaimer**

© 1999 by ZiLOG, Inc. All rights reserved. Information in this publication concerning the devices, applications, or technology described is intended to suggest possible uses and may be superseded. ZiLOG, INC. DOES NOT ASSUME LIABILITY FOR OR PROVIDE A REPRESENTATION OF ACCURACY OF THE INFORMATION, DEVICES, OR TECHNOLOGY DESCRIBED IN THIS DOCUMENT. ZiLOG ALSO DOES NOT ASSUME LIABILITY FOR INTELLECTUAL PROPERTY INFRINGEMENT RELATED IN ANY MANNER TO USE OF INFORMATION, DEVICES, OR TECHNOLOGY DESCRIBED HEREIN OR OTHERWISE. Except with the express written approval ZiLOG, use of information, devices, or technology as critical components of life support systems is not authorized. No licenses or other rights are conveyed, implicitly or otherwise, by this document under any intellectual property rights.